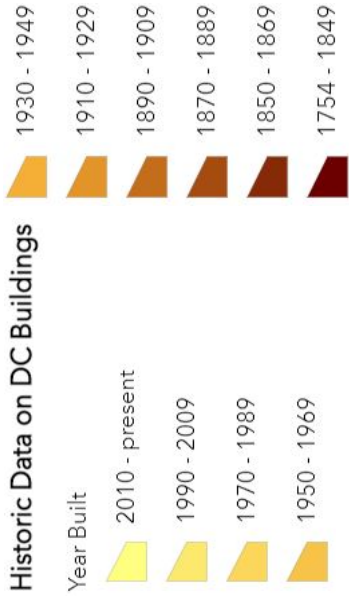


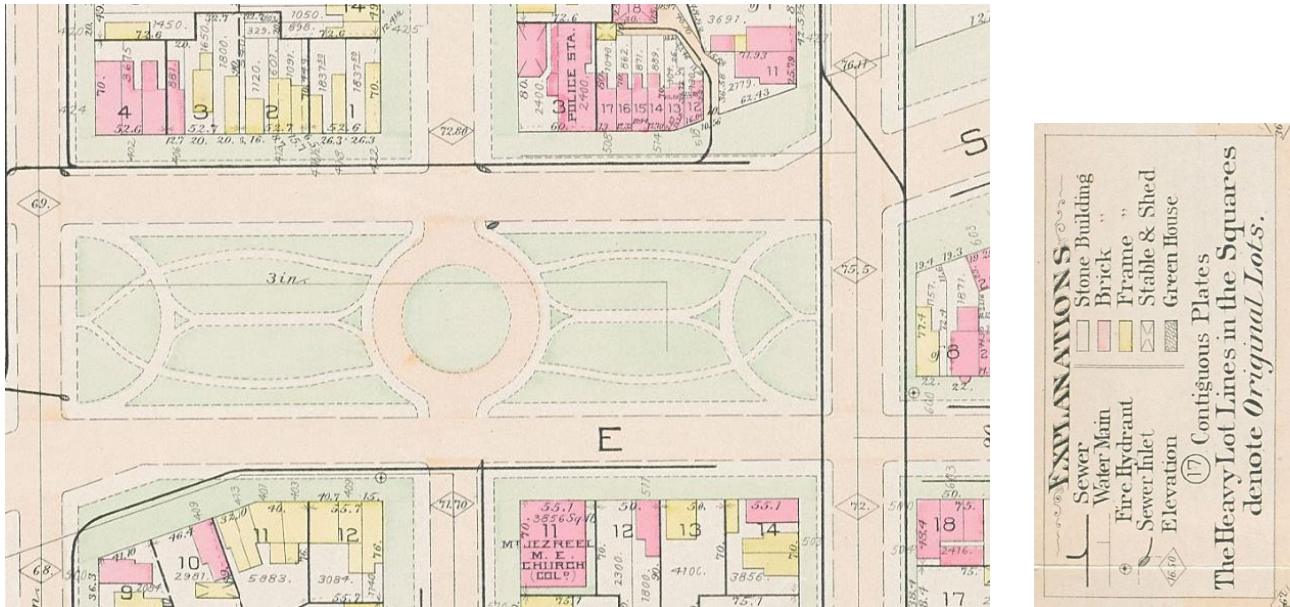
Parks – Treasures of Capitol Hill

Marion to Garfield Park – walking tour 2024



MARION TO GARFIELD PARK - TOUR STOPS

Stop 1 – Marion Park



Hopkins 1893

Stop 2 – Carbery House, 423 6th St. SE, corner of E and 421 ½ 6th St. SE
 Built in 1802-04 in Federal style, enlarged in 1889 with Victorian era tower and porch.

Stop 3 – Mt. Jezreel Baptist Church, 501 E St. SE and South side of the park

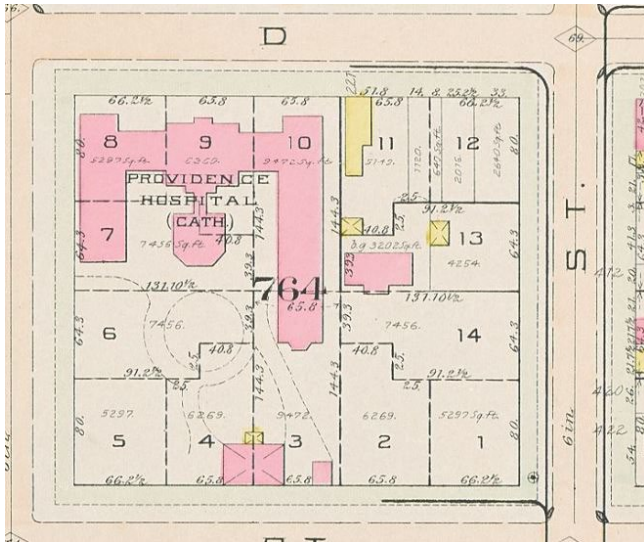


Mt Jezreel church was built in 1880's by its first congregation of freed slaves.

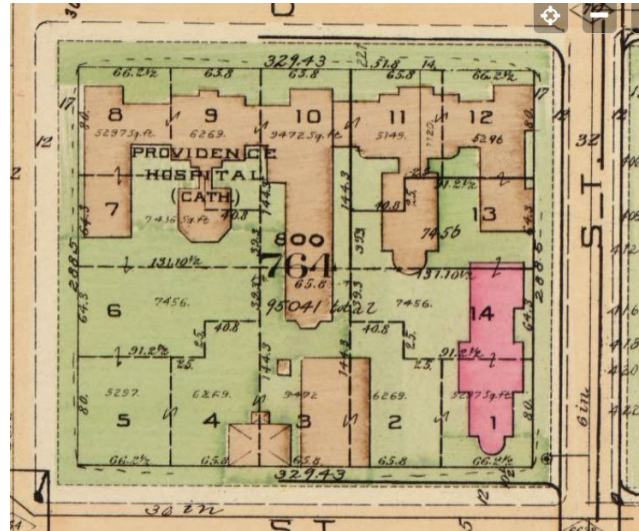
It was designed by Calvin Brent, first Black architect in the district.

Stop 4 – St. Peter School, 423 3rd St. SE
 The oldest parochial school in Washington, built in 1860's.

Stop 5 – Providence Park

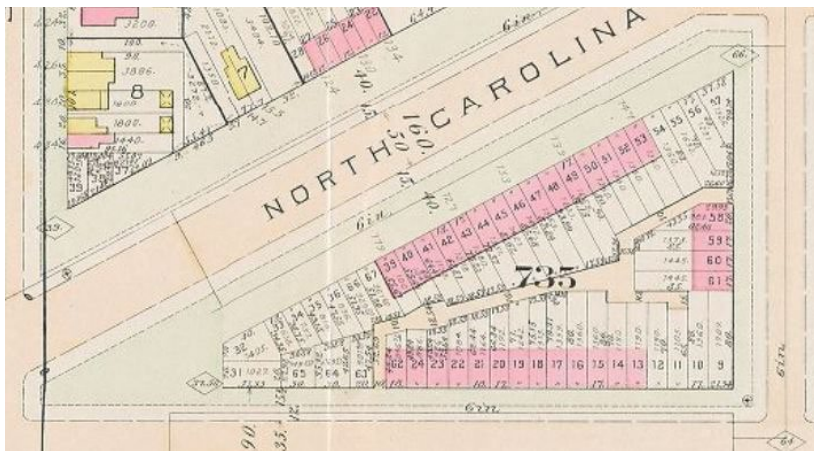


Hopkins 1893

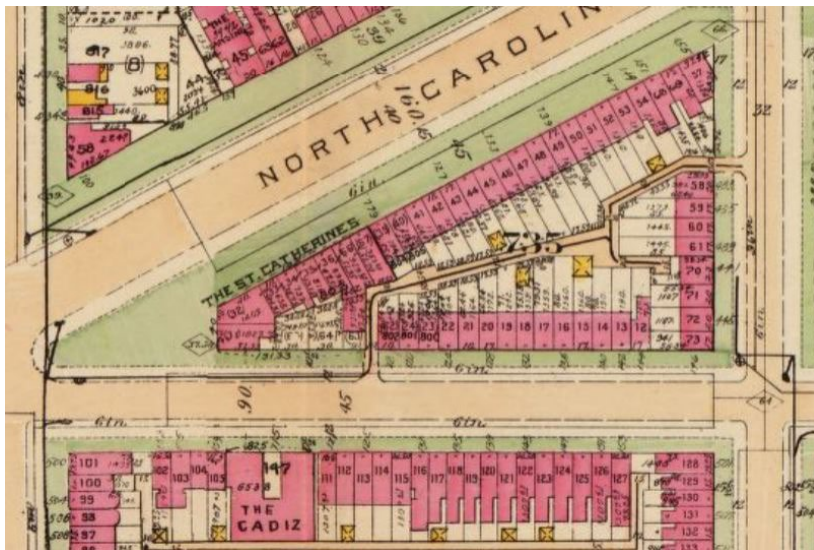


Baist 1919

Stop 6 – Square 0735



Hopkins 1893

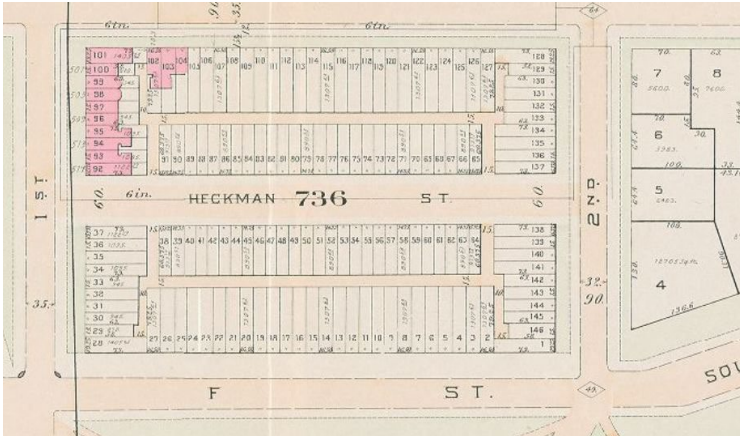


Baist 1919

From 1860 till 1950's Providence Park was a site of Providence Hospital run by Roman Catholic Daughters of Charity. Hospital buildings were condemned and torn down in 1965.

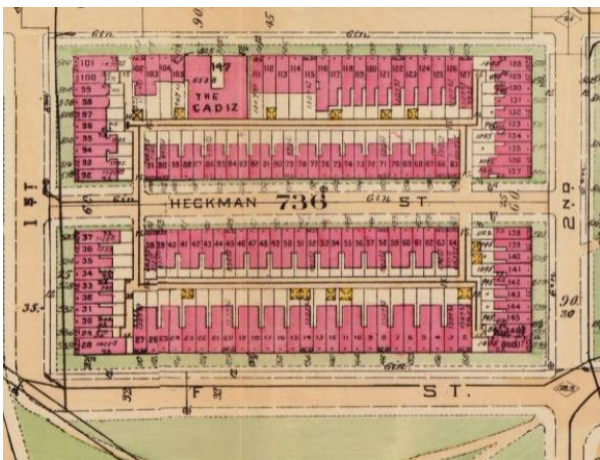
Majority of the houses on the square 735 were built in 1892-93, designed by architect Chas Burden for John Wagman. Home for Working Girls on 101 North Carolina designed by Mr Norris was built in 1900.

Stop 7 – Duddington Place SE, Square 736



Hopkins 1893

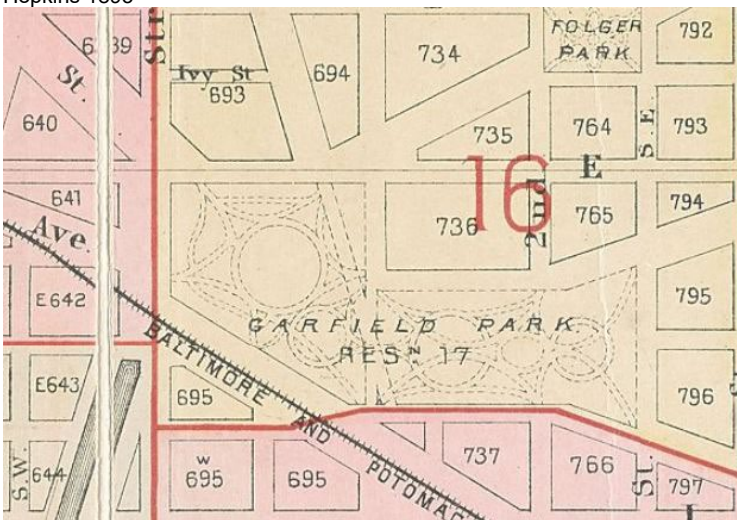
Square 736 was originally a site of Daniel Carroll's mansion. Land was sold in 1886 and subdivided in 1890 by Mr. Heckman. New row houses by several different developers were build on the square over next two decades.



Baist 1919

Stop 8 – Garfield Park

Hopkins 1893



One of designated open spaces in L'Enfant Plan this park was severely reduced in size over centuries. Construction of rail line, Capitol Power Plant and highway reduced the park area from 24 to 7.1 acres.

Dent School, 210 South Carolina Ave. SE

Giddings School, 315 Old G St.